

MONTHLY MEMBERSHIP PROGRESS REPORT

District 17 N

Results as of: 5/31/2024

GMT:

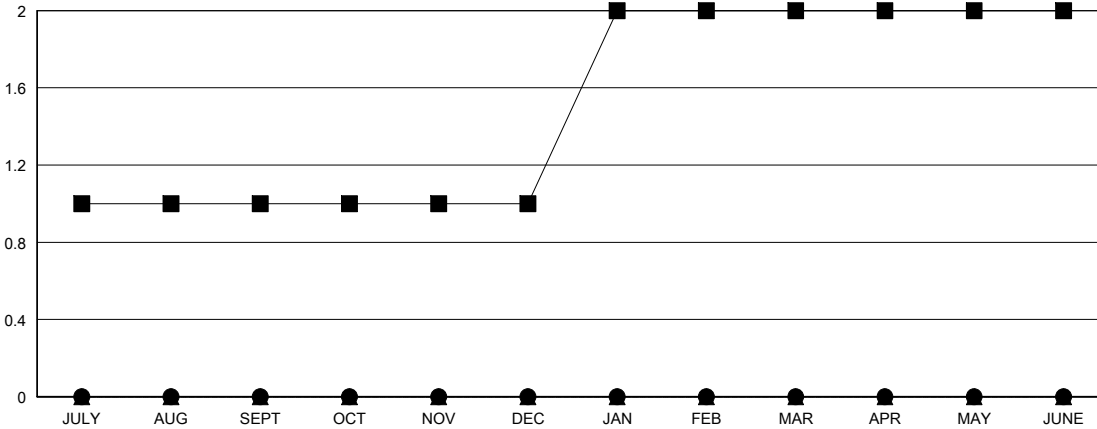
LOCATION KANSAS

GMT CA

Clubs			
RESULTS FOR 2023-2024			
QUARTER	NEW CLUB GOAL	NEW CLUBS	DROPPED CLUBS
JULY/AUG/SEPT	1	0	0
OCT/NOV/DEC	0	0	1
JAN/FEB/MAR	1	0	0
APR/MAY/JUNE	0	0	0

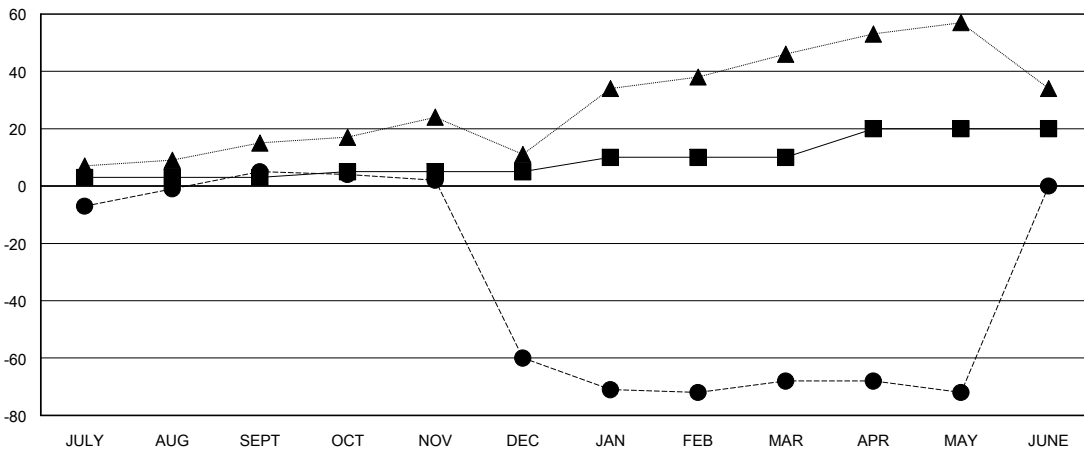
Members			
RESULTS FOR 2023-2024			
QUARTER	MEMBER GROWTH NET GOAL	MEMBER GROWTH ACTUAL	DROPPED MEMBERS ACTUAL (including transfers)
JULY/AUG/SEPT	3	37	28
OCT/NOV/DEC	2	25	87
JAN/FEB/MAR	5	42	35
APR/MAY/JUNE	10	29	28

GOALS AND ACTUAL NEW CLUBS CUMULATIVE



- - CURRENT YEAR GOALS FOR NEW CLUBS
- - CURRENT YEAR ACTUAL NEW CLUBS
- ▲ - LAST YEAR ACTUAL NEW CLUBS

GOALS AND ACTUAL MEMBERS CUMULATIVE



- - MEMBER GROWTH NET GOAL
- - MEMBER GROWTH ACTUAL
- ▲ - LAST YEAR MEMBERSHIP ACTUAL

DROPPED CLUBS: 1	37 CLUBS OF 68 ADDED 1 OR MORE NEW MEMBERS	GENDER DISTRIBUTION	
		MALE 958 (68.43%)	FEMALE 442 (31.57%)
DROPPED MEMBERS		CLICK HERE FOR CUMULATIVE MEMBERSHIP DATA	TOTAL FAMILY UNIT MEMBERS 266
DECEASED 23	CLUB CANCELLED 14		FAMILY MEMBERS PAYING HALF DUES 135
OTHER 140	TOTAL 177		